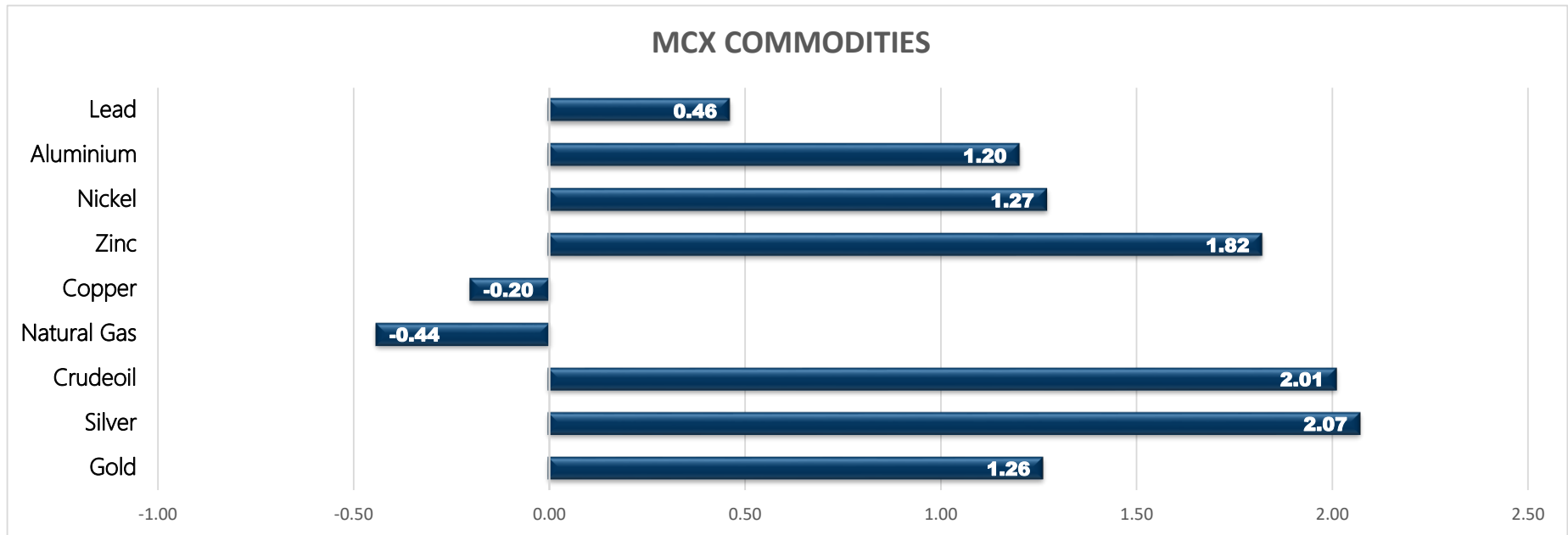


Commodity	Close	% Change	Commodity	Ltp*	% Change	Economical Data	
Gold	45919.00	1.26	Gold\$	1737.25	-0.34	EUR	Spanish Services PMI
Silver	65897.00	2.07	Silver\$	25.03	-0.47	EUR	Italian Services PMI
Crudeoil	4367.00	2.01	Crudeoil\$	59.33	1.16	EUR	French Final Services PMI
Natural Gas	182.80	-0.44	Natural Gas\$	2.46	-2.19	EUR	German Final Services PMI
Copper	688.70	-0.20	Lme Copper	9009.00	-0.34	EUR	Final Services PMI
Zinc	223.65	1.82	Lme Zinc	2826.50	-0.12	EUR	Spanish 10-y Bond Auction
Nickel	1247.40	1.27	Lme Nickel	16600.00	-0.72	USD	Trade Balance
Aluminium	180.95	1.20	Lme Lead	1963.00	-0.25	USD	FOMC Member Evans Speaks
Lead	164.30	0.46	Lme Aluminium	2252.00	-0.35	USD	Crude Oil Inventories

MCX COMMODITIES



MCX MARKET SYNOPSIS

Contract	Open	High	Low	Close	Rs Chg	% Chg	Volume	OI	% Chg
Copper Apr	693.90	693.90	682.15	688.70	-1.40	-0.20	10316	2775	-16.19
Copper May	685.00	691.40	683.00	689.10	-1.25	-0.18	232	182	2.82
Zinc Apr	220.80	224.25	220.80	223.65	4.00	1.82	6892	2067	22.53
Zinc May	220.75	223.05	220.30	222.85	3.90	1.78	68	148	18.40
Nickel Apr	1227.00	1249.60	1224.50	1247.40	15.70	1.27	5587	1526	9.78
Nickel May	1228.00	1251.20	1225.50	1248.60	14.70	1.19	128	88	20.55
Aluminium Apr	178.55	181.35	178.50	180.95	2.15	1.20	2584	1756	17.14
Aluminium May	178.10	180.40	178.10	179.95	1.95	1.10	105	82	57.69
Lead Apr	163.25	164.70	161.80	164.30	0.75	0.46	2691	458	0.66
Lead May	163.05	163.55	162.50	163.40	0.45	0.28	17	8	60.00

MCX PIVOT

Contract	Sup - 3	Sup - 2	Sup - 1	Pivot	Res - 1	Res - 2	Res - 3	OI Status
Copper Apr	670.90	676.50	682.70	688.30	694.50	700.10	706.30	Long Liquidation
Zinc Apr	218.20	219.50	221.60	222.90	225.00	226.30	228.40	Fresh Buying
Nickel Apr	1206.30	1215.40	1231.40	1240.50	1256.50	1265.60	1281.60	Fresh Buying
Aluminium Apr	176.50	177.50	179.30	180.30	182.10	183.10	184.90	Fresh Buying
Lead Apr	159.60	160.70	162.50	163.60	165.40	166.50	168.30	Fresh Buying

INTERNATIONAL MARKET SYNOPSIS

Commodity	Open	High	Low	Ltp*	Rs Chg	% Chg	LME STOCKS	
LME Copper	8925.00	9104.00	8925.00	9040.00	-31.00	-0.34	LME Copper	-350
LME Zinc	2807.00	2849.00	2796.50	2830.00	-3.50	-0.12	LME Zinc	-1850
LME Nickel	16370.00	16795.00	16330.00	16720.00	-120.00	-0.72	LME Nickel	216
LME Lead	1964.00	1976.50	1936.00	1968.00	-5.00	-0.25	LME Lead	-550
LME Aluminium	2240.00	2273.50	2240.00	2260.00	-8.00	-0.35	LME Aluminium	-7125

INTERNATIONAL PIVOT

Commodity	Sup - 3	Sup - 2	Sup - 1	Pivot	Res - 1	Res - 2	Res - 3
LME Copper	8763	8844	8942	9023	9121	9202	9300
LME Zinc	2749	2773	2801	2825	2854	2878	2906
LME Nickel	15970	16150	16435	16615	16900	17080	17365
LME Lead	1903	1920	1944	1960	1984	2001	2025
LME Aluminium	2209	2224	2242	2258	2276	2291	2309

COPPER

Copper trading range for the day is 676.5-700.1.

Copper prices dropped as Codelco struck a wage deal with workers at its Radomiro Tomic mine, avoiding a potential strike and easing concerns about supply

Japan's output of refined copper in the first half of the 2021/22 financial year will fall 1.9% year on year

Copper inventories in warehouses monitored by the Shanghai Futures Exchange rose 4.9 percent from last Friday, the exchange said.

Warehouse stock for Copper at LME was at 143425mt that is down by -350mt.



ZINC

Zinc trading range for the day is 219.5-226.3.

Zinc prices gained as treatment charges for domestic zinc concentrate continued to fall and rising production costs supported prices.

In addition, zinc social inventories shrank further as downstream users restocked on demand.

Data showed that social inventories of refined zinc ingots decreased 14,500 mt in the week ended April 2 to 233,500 mt.

Warehouse stock for Zinc at LME was at 268650mt that is down by -1850mt.



NICKEL

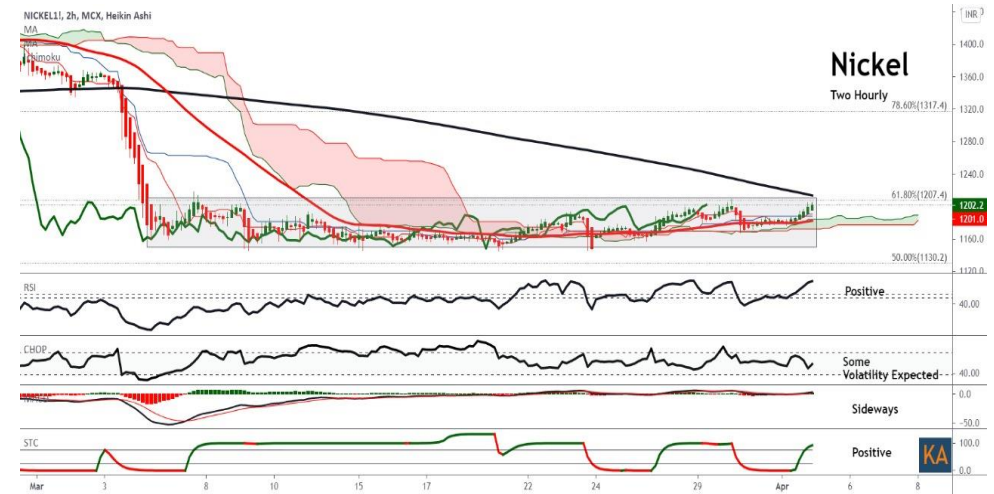
Nickel trading range for the day is 1215.4-1265.6.

Nickel gains as a streak of strong U.S. economic data fueled optimism even as a smaller-than-expected climb in 10-year Treasury notes eased inflation concerns.

China services PMI jumps to 54.3 in march – Caixin

Eurozone manufacturing activity grew at its fastest pace on record in March, with IHS Markit’s final manufacturing PMI coming in at 62.5

Warehouse stock for Nickel at LME was at 259398mt that is up by 216mt.



ALUMINIUM

Aluminium trading range for the day is 177.5-183.1.

Aluminium prices gained as better-than-expected jobs data boosted economic outlook.

US non-farm employment added 916,000 in March, reaching to its highest in seven months, and unemployment rate fell to 6%.

The premiums for aluminium shipments to Japanese buyers for April to June were set at \$148-\$149 a tonne, up 14-15% from this quarter

Warehouse stock for Aluminium at LME was at 1882275mt that is down by -7125mt.



SPREAD SYNOPSIS

Copper				
Month	Rate	Apr	May	Jun
Apr	688.70		0.40	0.75
May	689.10			0.35
Jun	689.45			

Zinc				
Month	Rate	Apr	May	Jun
Apr	223.65		-0.80	-1.60
May	222.85			-0.80
Jun	222.05			

Spread History			
Commodity	Max	Min	Avg
Copper	-19.90	5.35	64.00
Zinc	-7.25	0.38	2.40
Nickel	-7.25	0.38	2.40
Aluminium	-7.10	1.04	3.10
Lead	-22.20	3.71	13.20

Nickel				
Month	Rate	Apr	May	Jun
Apr	1247.40		1.20	2.30
May	1248.60			1.10
Jun	1249.70			

Aluminium				
Month	Rate	Apr	May	Jun
Apr	180.95		-1.00	-2.00
May	179.95			-1.00
Jun	178.95			

COPPER PRICE MOVEMENT SINCE 2011													
Year	JAN	FEB	MAR	APR	MAY	JUN	JUL	AUG	SEP	OCT	NOV	DEC	Growth
2011	451.90	445.75	425.30	415.90	417.35	421.10	436.85	427.10	349.80	392.95	409.75	406.00	-33.50
	2.82	-1.36	-4.59	-2.21	0.35	0.90	3.74	-2.23	-18.10	12.34	4.28	-0.92	-7.62
2012	417.15	417.70	431.65	443.90	420.25	429.40	422.55	424.30	441.05	419.70	436.30	443.75	37.75
	2.75	0.13	3.34	2.84	-5.33	2.18	-1.60	0.41	3.95	-4.84	3.96	1.71	9.30
2013	440.05	418.20	410.20	381.00	413.05	406.60	421.55	486.95	466.40	452.50	444.40	468.55	24.80
	-0.83	-4.97	-1.91	-7.12	8.41	-1.56	3.68	15.51	-4.22	-2.98	-1.79	5.43	5.59
2014	444.95	443.20	404.15	403.00	410.80	422.35	436.10	417.95	416.00	414.70	390.75	399.10	-69.45
	-5.04	-0.39	-8.81	-0.28	1.94	2.81	3.26	-4.16	-0.47	-0.31	-5.78	2.14	-14.82
2015	342.85	371.80	378.45	404.60	386.65	368.75	335.40	341.75	342.70	336.55	301.15	315.50	-83.60
	-14.09	8.44	1.79	6.91	-4.44	-4.63	-9.04	1.89	0.28	-1.79	-10.52	4.77	-20.95
2016	311.60	322.00	321.25	334.20	312.50	327.15	329.70	305.60	328.55	326.05	396.05	372.90	57.40
	-1.24	3.34	-0.23	4.03	-6.49	4.69	0.78	-7.31	7.51	-0.76	21.47	-5.85	18.19
2017	406.10	397.85	380.75	367.60	368.75	385.20	410.65	434.55	427.95	444.70	431.40	466.00	93.10
	8.90	-2.03	-4.30	-3.45	0.31	4.46	6.61	5.82	-1.52	3.91	-2.99	8.02	24.97
2018	450.90	446.00	436.80	449.40	457.05	446.15	430.15	414.00	452.95	435.70	433.10	407.75	-58.25
	-3.24	-1.09	-2.06	2.88	1.70	-2.38	-3.59	-3.75	9.41	-3.81	-0.60	-5.85	-12.50
2019	437.60	464.70	451.05	450.30	404.50	411.05	444.15	443.95	438.05	437.95	432.60	441.25	33.50
	7.32	6.19	-2.94	-0.17	-10.17	1.62	8.05	-0.05	-1.33	-0.02	-1.22	2.00	8.22
2020	427.25	421.80	376.80	403.45	416.20	464.70	500.75	527.30	525.20	526.40	582.30	594.70	153.45
	-3.17	-1.28	-10.67	7.07	3.16	11.65	7.76	5.30	-0.40	0.23	10.62	2.13	34.78
2021	596.40	702.95	667.95										73.25
	0.29	17.87	-4.98										12.32
Average	-1.25	2.69	-2.53	0.32	-1.17	1.29	2.89	1.32	-0.10	0.35	2.05	2.44	Average

ZINC PRICE MOVEMENT SINCE 2011

Year	JAN	FEB	MAR	APR	MAY	JUN	JUL	AUG	SEP	OCT	NOV	DEC	Growth
2011	107.25	111.90	103.50	101.20	101.30	103.50	109.95	104.85	93.20	93.75	101.35	98.45	-10.55
	-1.61	4.34	-7.51	-2.22	0.10	2.17	6.23	-4.64	-11.11	0.59	8.11	-2.86	-9.68
2012	105.60	104.00	102.85	107.10	107.15	103.95	103.20	100.60	110.45	99.30	110.55	111.45	13.00
	7.26	-1.52	-1.11	4.13	0.05	-2.99	-0.72	-2.52	9.79	-10.10	11.33	0.81	13.20
2013	113.95	111.05	102.90	110.50	106.30	109.70	109.55	128.25	117.80	118.25	116.00	129.05	17.60
	2.24	-2.54	-7.34	7.39	-3.80	3.20	-0.14	17.07	-8.15	0.38	-1.90	11.25	15.79
2014	122.80	130.95	119.05	123.95	122.40	132.45	144.55	142.90	141.10	143.40	138.00	137.20	8.15
	-4.84	6.64	-9.09	4.12	-1.25	8.21	9.14	-1.14	-1.26	1.63	-3.77	-0.58	6.32
2015	130.40	127.70	129.90	149.75	141.05	127.10	122.85	121.30	108.90	109.10	103.20	106.15	-31.05
	-4.96	-2.07	1.72	15.28	-5.81	-9.89	-3.34	-1.26	-10.22	0.18	-5.41	2.86	-22.63
2016	109.25	122.45	118.40	129.20	129.30	142.15	148.80	155.90	158.10	163.90	185.55	173.80	67.65
	2.92	12.08	-3.31	9.12	0.08	9.94	4.68	4.77	1.41	3.67	13.21	-6.33	63.73
2017	193.10	187.70	180.40	169.45	165.95	178.25	179.50	200.95	210.20	215.05	205.95	207.60	33.80
	11.10	-2.80	-3.89	-6.07	-2.07	7.41	0.70	11.95	4.60	2.31	-4.23	0.80	19.45
2018	228.60	227.75	214.10	211.75	209.05	202.15	180.40	176.10	186.65	192.60	180.20	171.95	-35.65
	10.12	-0.37	-5.99	-1.10	-1.28	-3.30	-10.76	-2.38	5.99	3.19	-6.44	-4.58	-17.17
2019	195.15	197.80	221.35	223.20	203.00	200.50	192.25	185.30	185.55	187.85	185.05	179.00	7.05
	13.49	1.36	11.91	0.84	-9.05	-1.23	-4.11	-3.62	0.13	1.24	-1.49	-3.27	4.10
2020	174.45	154.85	145.50	150.60	159.00	163.50	184.00	196.05	190.80	201.80	220.20	214.40	35.40
	-2.54	-11.24	-6.04	3.51	5.58	2.83	12.54	6.55	-2.68	5.77	9.12	-2.63	11.81
2021	205.90	219.55	220.00										5.60
	-3.96	6.63	0.20										11.81
Average	0.89	1.16	-2.09	2.65	-2.59	0.61	2.69	2.59	-0.91	1.82	0.66	0.77	Average

NICKEL PRICE MOVEMENT SINCE 2011

Year	JAN	FEB	MAR	APR	MAY	JUN	JUL	AUG	SEP	OCT	NOV	DEC	Growth
2011	1243.90	1294.00	1165.40	1202.40	1045.80	1037.70	1098.80	1022.90	898.80	940.90	869.60	992.20	-119.60
	11.88	4.03	-9.94	3.17	-13.02	-0.77	5.89	-6.91	-12.13	4.68	-7.58	14.10	-10.76
2012	1050.20	974.30	927.40	936.60	923.80	935.40	892.80	884.40	978.50	878.50	931.70	935.70	-56.50
	5.85	-7.23	-4.81	0.99	-1.37	1.26	-4.55	-0.94	10.64	-10.22	6.06	0.43	-5.69
2013	979.10	895.70	921.50	824.00	826.70	823.90	829.20	928.20	869.80	892.20	836.90	864.50	-71.20
	4.64	-8.52	2.88	-10.58	0.33	-0.34	0.64	11.94	-6.29	2.58	-6.20	3.30	-7.61
2014	855.80	902.80	945.50	1097.40	1139.60	1124.30	1130.40	1140.30	1016.80	971.00	996.80	945.70	81.20
	-1.01	5.49	4.73	16.07	3.85	-1.34	0.54	0.88	-10.83	-4.50	2.66	-5.13	9.49
2015	922.90	874.90	779.70	881.00	808.00	744.50	698.50	668.10	661.90	660.90	583.50	582.00	-363.70
	-2.41	-5.20	-10.88	12.99	-8.29	-7.86	-6.18	-4.35	-0.93	-0.15	-11.71	-0.26	-38.46
2016	579.80	577.60	549.10	629.10	568.50	636.40	700.00	651.20	703.30	696.30	751.20	706.00	169.20
	-0.38	-0.38	-4.93	14.57	-9.63	11.94	9.99	-6.97	8.00	-1.00	7.88	-6.02	29.07
2017	670.30	725.30	640.10	608.90	568.50	600.60	655.70	743.70	692.60	766.30	727.50	783.40	77.40
	-5.06	8.21	-11.75	-4.87	-6.63	5.65	9.17	13.42	-6.87	10.64	-5.06	7.68	10.96
2018	863.10	898.30	840.50	926.40	1024.40	1022.30	944.00	909.30	905.00	860.00	774.80	741.60	-41.80
	10.17	4.08	-6.43	10.22	10.58	-0.20	-7.66	-3.68	-0.47	-4.97	-9.91	-4.28	-5.34
2019	884.90	931.10	904.00	854.60	876.50	906.00	1013.50	1245.40	1216.80	1200.40	1005.50	1029.20	287.60
	19.32	5.22	-2.91	-5.46	2.56	3.37	11.87	22.88	-2.30	-1.35	-16.24	2.36	38.78
2020	943.80	901.00	860.10	922.60	940.40	975.00	1041.90	1135.70	1065.30	1142.70	1206.70	1212.20	183.00
	-8.30	-4.53	-4.54	7.27	1.93	3.68	6.86	9.00	-6.20	7.27	5.60	0.46	17.78
2021	1286.90	1367.70	1184.10										-28.10
	6.16	6.28	-13.42										-2.32
Average	3.37	1.29	-2.98	4.20	-3.04	0.58	3.21	3.12	-1.76	0.18	-3.13	1.80	Average

ALUMINIUM PRICE MOVEMENT SINCE 2011

Year	JAN	FEB	MAR	APR	MAY	JUN	JUL	AUG	SEP	OCT	NOV	DEC	Growth
2011	114.05	114.35	116.05	122.55	119.25	112.20	115.55	112.60	107.95	106.85	103.10	106.95	-3.20
	3.54	0.26	1.49	5.60	-2.69	-5.91	2.99	-2.55	-4.13	-1.02	-3.51	3.73	-2.91
2012	112.15	112.65	108.35	108.05	111.35	105.65	103.95	103.00	110.95	101.85	113.35	111.75	4.80
	4.86	0.45	-3.82	-0.28	3.05	-5.12	-1.61	-0.91	7.72	-8.20	11.29	-1.41	4.49
2013	110.50	105.40	103.65	100.10	105.95	105.05	105.85	122.10	113.15	112.55	106.75	109.20	-2.55
	-1.12	-4.62	-1.66	-3.42	5.84	-0.85	0.76	15.35	-7.33	-0.53	-5.15	2.30	-2.28
2014	103.90	107.00	104.00	106.75	107.65	111.20	121.45	126.70	119.20	126.85	128.35	116.00	6.80
	-4.85	2.98	-2.80	2.64	0.84	3.30	9.22	4.32	-5.92	6.42	1.18	-9.62	6.23
2015	113.45	112.40	111.95	121.40	108.75	104.95	102.00	107.15	102.60	94.40	96.35	100.15	-15.85
	-2.20	-0.93	-0.40	8.44	-10.42	-3.49	-2.81	5.05	-4.25	-7.99	2.07	3.94	-13.66
2016	103.80	111.25	98.90	111.25	104.00	110.55	108.30	107.20	110.55	115.95	118.00	117.20	17.05
	3.64	7.18	-11.10	12.49	-6.52	6.30	-2.04	-1.02	3.12	4.88	1.77	-0.68	17.02
2017	123.40	126.45	126.20	123.90	123.90	123.55	121.95	135.30	137.90	138.60	131.00	143.30	26.10
	5.29	2.47	-0.20	-1.82	0.00	-0.28	-1.30	10.95	1.92	0.51	-5.48	9.39	22.27
2018	141.65	140.50	130.65	148.50	154.15	149.70	141.40	150.10	145.90	143.95	137.20	128.15	-15.15
	-1.15	-0.81	-7.01	13.66	3.80	-2.89	-5.54	6.15	-2.80	-1.34	-4.69	-6.60	-10.57
2019	136.00	151.10	149.15	146.20	145.35	143.20	140.35	138.70	134.60	132.00	133.55	137.25	9.10
	6.13	11.10	-1.29	-1.98	-0.58	-1.48	-1.99	-1.18	-2.96	-1.93	1.17	2.77	7.10
2020	139.10	136.70	134.45	131.00	131.70	137.95	140.90	146.15	143.80	152.95	167.05	160.95	23.70
	1.35	-1.73	-1.65	-2.57	0.53	4.75	2.14	3.73	-1.61	6.36	9.22	-3.65	17.27
2021	162.25	173.50	176.65										15.70
	0.81	6.93	1.82										9.75
Average	0.81	2.06	-1.72	2.42	-0.79	-0.99	1.00	3.31	-0.75	-0.12	0.53	0.61	Average

The logo for KEDIA ADVISORY is displayed within a dark blue rectangular box. The word "KEDIA" is written in a bold, yellow, sans-serif font, and the word "ADVISORY" is written in a white, sans-serif font to its right.

KEDIA STOCKS & COMMODITIES RESEARCH PVT LTD.
Mumbai. INDIA.

For more details, please contact:
Mobile: +91 9323406035 / 9320096333 / 9619551022
Email: info@kediaadvisory.com
URL: www.kediaadvisory.com
SEBI REGISTRATION NUMBER - INH000006156

General Disclaimers: This Report is prepared and distributed by Kedia Stocks & Commodities Research Pvt Ltd. for information purposes only. The recommendations, if any, made herein are expression of views and/or opinions and should not be deemed or construed to be neither advice for the purpose of purchase or sale through KSCRPL nor any solicitation or offering of any investment /trading opportunity. These information / opinions / views are not meant to serve as a professional investment guide for the readers. No action is solicited based upon the information provided herein. Recipients of this Report should rely on information/data arising out of their own investigations. Readers are advised to seek independent professional advice and arrive at an informed trading/investment decision before executing any trades or making any investments. This Report has been prepared on the basis of publicly available information, internally developed data and other sources believed by KSCRPL to be reliable. KSCRPL or its directors, employees, affiliates or representatives do not assume any responsibility for, or warrant the accuracy, completeness, adequacy and reliability of such information / opinions / views. While due care has been taken to ensure that the disclosures and opinions given are fair and reasonable, none of the directors, employees, affiliates or representatives of KSCRPL shall be liable for any direct, indirect, special, incidental, consequential, punitive or exemplary damages, including lost profits arising in any way whatsoever from the information / opinions / views contained in this Report. The possession, circulation and/or distribution of this Report may be restricted or regulated in certain jurisdictions by appropriate laws. No action has been or will be taken by KSCRPL in any jurisdiction (other than India), where any action for such purpose(s) is required. Accordingly, this Report shall not be possessed, circulated and/ or distributed in any such country or jurisdiction unless such action is in compliance with all applicable laws and regulations of such country or jurisdiction. KSCRPL requires such recipient to inform himself about and to observe any restrictions at his own expense, without any liability to KSCRPL. Any dispute arising out of this Report shall be subject to the exclusive jurisdiction of the Courts in India.